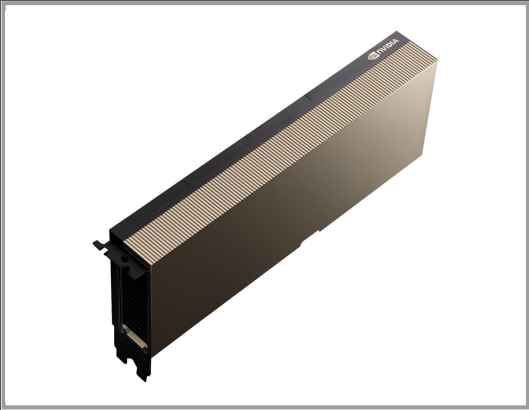


# HPE NVIDIA Tesla A100 - GPU computing processor

A100 Tensor Core - 40 GB HBM2 - PCIe 3.0 - fanless - for Edgeline e920d; ProLiant XL270d Gen10 - XL290n Gen10 - XL645d Gen10 - XL675d Gen10

Group	Graphics Cards
Manufacturer	HPE
Manufacturer item no.	R6B53A
EAN/UPC	0190017482514



## Description

The NVIDIA accelerators for HPE ProLiant servers improve computational performance, dramatically reducing the completion time for parallel tasks, offering quicker time to solutions. Co-locating the NVIDIA Quadro or NVIDIA GRID GPUs with computational servers, large data sets can be shared, dramatically improving display refresh rates. These GPUs are specifically designed to enable rich graphics in virtualized environments. Hewlett Packard Enterprise can satisfy NVIDIA GRID software via HPE Complete. NVIDIA accelerators can be configured and monitored by HPE Insight Cluster Management Utility (CMU). HPE Insight CMU monitors and displays GPU health and temperature, as well as installs and provisions the GPU drivers and CUDA software.

The NVIDIA A100 Tensor Core GPU delivers unprecedented acceleration at every scale for AI, data analytics, and HPC to tackle the world's toughest computing challenges. As the engine of the NVIDIA data center platform, A100 can efficiently scale up to thousands of GPUs or, using new Multi-Instance GPU (MIG) technology, can be partitioned into seven isolated GPU instances to accelerate workloads of all sizes. A100's third generation Tensor Core technology now accelerates more levels of precision for diverse workloads, speeding time to insight as well as time to market.

## Main features

Product Description	NVIDIA Tesla A100 - GPU computing processor - A100 Tensor Core - 40 GB
Device Type	GPU computing processor
Bus Type	PCI Express 3.0
Graphics Engine	NVIDIA A100 Tensor Core
Memory	40 GB HBM2
CUDA Cores	6912
Fanless	Yes
Dimensions (WxDxH)	3.48 cm x 26.67 cm x 11.1 cm
Designed For	Edgeline e920d; ProLiant XL270d Gen10, XL270d Gen10 for HPE Ezmeral Container Platform, XL290n Gen10 Plus, XL645d Gen10 Plus, XL675d Gen10 Plus

## Extended details

General	
Device Type	GPU computing processor - fanless
Bus Type	PCI Express 3.0
Graphics Engine	NVIDIA A100 Tensor Core
CUDA Cores	6912

Features	9.7 Tflops peak double-precision floating point performance, 19.5 Tflops peak single-precision floating point performance
	<b>Memory</b>
Size	40 GB
Technology	HBM2
Bandwidth	1555 GBps
	<b>Miscellaneous</b>
Power Consumption Operational	250 Watt
Width	3.48 cm
Depth	26.67 cm
Height	11.1 cm
Weight	3.62 kg
	<b>Manufacturer Warranty</b>
Service & Support	Limited warranty - parts and labour - 1 year
	<b>Compatibility Information</b>
Designed For	HPE Edgeline e920d   HPE ProLiant XL270d Gen10, XL270d Gen10 for HPE Ezmeral Container Platform, XL290n Gen10 Plus, XL645d Gen10 Plus, XL675d Gen10 Plus

Technical data © 1WorldSync. Subject to technical modifications and errors.